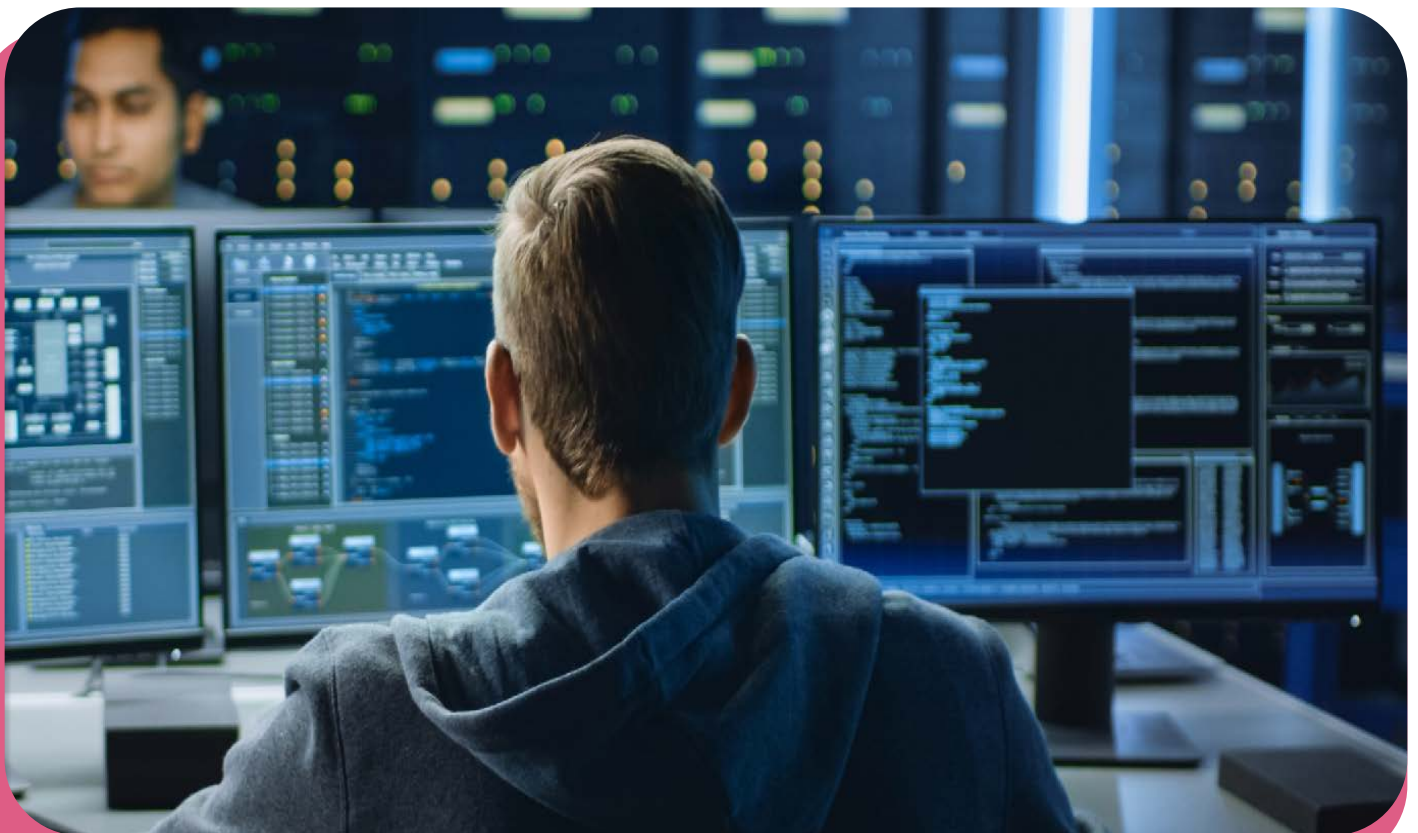


# Cyber Security

**Reach new limits of cyber security  
across your people, processes  
and technology**



# The **uprising** of cyber security across the UK

Cyber security has become more crucial than ever, placing significant pressure on IT leaders in every industry to adapt their IT strategies and effectively combat the increasing number of security incidents, while ensuring a seamless user experience.

Compounding this challenge, hackers are employing increasingly sophisticated and determined tactics, breaching defences with alarming frequency. According to PwC, **90%** of organisations say they have experienced greater exposure to cyber risk due to increased digitalisation in the last two years.

These developments directly impact operational efficiency, delivery, security strategy management, compliance and budgets, making it increasingly difficult for CTOs, CIOs and CISOs to effectively juggle all these responsibilities.

# 32%

**of businesses report having experienced a cyber security breach or attack in the last 12 months\***

\*source Department of Science, Innovation and Technology Cyber Security Survey 2023

Our Cyber security practice is led by a team of experienced experts who understand the importance of assessing, protecting, detecting, responding to and remediating cyber threats across people, processes and technology.

**The question arises:** *How can IT and Cyber teams establish a robust defence for their technology and users when faced with limited resources and skills to implement, operate and manage? This is where Academia comes in. This is where Academia comes in, with two decades of knowledge and experience.*

With two decades of knowledge gained from working closely with customers and partners, Academia has the expertise to help you navigate the ever-changing landscape of cyber threats successfully.

# Combating the cyber security challenge – The Academia way

Our 'always on' cyber framework is flexible to suit your needs, enabling you to relieve your cyber anxiety and deliver a secure, reliable and human-centric cyber strategy.

Modelled to mitigate risk across your entire organisation or institution – covering people, processes and technology, our cyber security framework begins with assessing your current security posture all the way through to responding and remediating cyber-attacks.



## Assess

### Cyber maturity assessment:

Audit to understand risk. Roadmap for compliance – Cyber essentials CIS/NICE.

### Compliance assessment & certification:

Conform to security standards with Cyber Essentials or ISO27001, CIS/NICE accreditations.

### Penetration Testing

Testing your cyber defences and vulnerabilities.



## Protect

### Endpoint security:

24/7 managed detection response to all threats including ransomware.

### Email & data security:

Prevent phishing/spam and limit opportunities for data to be stolen.

### Privilege access management:

Control access to critical assets.

### Identity & access management:

Control user;s access to resources.

### Firewall, VPN & Web security:

Protect network activity & web filtering.



## Detect

### Managed SOC (Security Operations Centre):

24/7 detection and protection of your entire IT estate by a highly skilled and trained team of security engineers.

### Always on vulnerability & breach monitoring:

Lock down networks to minimise possible vulnerabilities and threats.

### Backup & cloud storage:

Agile disaster recovery and cost-effective cloud storage.



## Respond & Remediate

### Cyber incident response:

We'll build a response plan with a threat containment/elimination strategy to minimise impact, recover systems and quickly restore your operations.

# We go **beyond** security products

Our cyber practice addresses your cyber security holistically to ensure we recommend solutions to help you deliver, manage and support your cyber strategy. We partner with world-leading vendors and have achieved the highest accreditations so that we can offer solutions that are fit for your purpose, not ours.

## We deliver value add, every time.

### To meet your strategic needs:

- ✓ Vital protection of your IP, data assets and devices
- ✓ Accelerate digital transformation and hybrid workforces
- ✓ Continuous improvement of your security strategy
- ✓ Achieve compliance and regulations
- ✓ Improve user experience
- ✓ Safeguard reputation
- ✓ Monthly reporting and risk analysis

### To meet your operational needs:

- ✓ Deploy best practice security control across the business
- ✓ Provision of consistent, integrated security processes
- ✓ Deliver 24/7 endpoint security of devices

### To meet your technology needs:

- ✓ Enhances security posture and maturity
- ✓ Improves efficiencies and cost-effectiveness
- ✓ Reduces duplication of workload
- ✓ Delivers a cohesive, robust line of defence

# Helping you **win** the battle against cyber threats

We take an engaged approach to understanding your security requirements for us to deliver a solution that fits your strategy and/or concerns, challenges and compliance issues.

1.



## Discover

We'll sit you down to find out more about your pains, challenges and goals.

Our Discovery session really gets down to the nuts and bolts of your current landscape and we hope to understand your ambitions for the future and how you want to work with us.

Our sessions are carried out by members of our Technical Solutions Team.

2.



## Assess

This is where we add our real value.

After digesting all the information obtained from the Discovery session, we'll think about the best services we can offer to achieve your goals and meet your budgets.

3.



## Propose

Once the team is happy with the outcomes of the assessment, we will put our pen to paper and provide you with an in-depth proposal that provides costings, SLA's and contract T&C's.

We will talk through the proposal with you and your stakeholders to ensure you are clear that the right service has been designed for you. If you need more information, we can provide this.

4.



## Launch

The final phase is all about bringing the proposal to life and bringing in our wider team.

We'll ensure the contracts are signed, a launch plan agreed and a delivery/support team in place so that everyone's collaborating and communicating throughout the project.

# Take a look at our great customers



teamitg



LUMESCA  
-GROUP-

Google

NHS  
Kent Community Health  
NHS Foundation Trust



Jet2.com



Crown  
Commercial  
Service  
Supplier



SPIRIT  
STUDIOS.



# What makes Academia Technology Group **different?**

## ✓ **We've got the technical expertise.**

We're proud and very lucky to be supported by a team of highly accredited technical engineers and consultants, so we understand exactly what we're supporting.

## ✓ **We make our services grow with you.**

Our cyber services are flexible and agile so that they can scale up/ down with your business requirements. If you're increasing your headcount, no issues, we can cost per user for most of our services.

## ✓ **We're compliant in every way.**

It's imperative that we hold the necessary operational certifications such as ISO9001 and ISO27001. This means we continuously improve the efficiency and consistency of our operations to ensure you experience excellence in everything. We are also proud to have been awarded supplier status on a number of National and Regional Frameworks.

## ✓ **We'll help you save money and achieve a return on your investment.**

Our managed services let you bypass hardware, setup, training and maintenance costs, freeing up in-house resources.

## ✓ **We're here to support you.**

From the outset, you will have access to a dedicated Service Delivery Manager, who will be just a call or email away for any help and assistance, plus we'll provide monthly reporting and lead quarterly review sessions. With a dedicated Account Manager, you will always have someone on hand to support you.

## Get in touch

The Progression Centre • Mark Road • Hemel Hempstead • HP2 7DW  
[www.academia.co.uk](http://www.academia.co.uk) • [info@academia.co.uk](mailto:info@academia.co.uk) • 01992 703 900

